

Products

- CCTV
- Access Control
- ANPR
- Visitor Management
- Panic Alarm Systems
- Interview Recording

Markets

- Marine
- Oil & Gas
- Law Enforcement
- Parking
- Security



Marine Zoom Camera With Wiper - Stainless Steel

FIXED

BHOS2Z180I66M

This is a fixed camera station entirely made in AISI316L stainless-steel, specifically designed for corrosive and harsh environments. It is equipped with the latest generation IP day/night camera, sunshield, heater/demister and wiper. It offers a high performance motorised zoom lens (x18). It is capable of wall, pole or pendant mounting, requiring only power and an IP connection. It can be used in Marine and Offshore environments including passenger and commercial vessels.



Features

- Suited to strong corrosive environments. Anti-corrosion, waterproof.
- 316L grade stainless steel for excellent protection in marine environments
- Uses SONY 1/2.8" CMOS Sensor
- AC220V/DC12V
- PTZ, Wall, pedestal or pendant mounting
- 2MP resolution
- IP66 rated
- 4.7 - 84.6 mm motorised zoom lens (x18)
- Suited to harsh environmental conditions including petrochemicals, mining, military, medicine, oil & gas, marine, drilling platforms, food processing and storage, offshore etc.

Products

- CCTV
- Access Control
- ANPR
- Visitor Management
- Panic Alarm Systems
- Interview Recording

Markets

- Marine
- Oil & Gas
- Law Enforcement
- Parking
- Security

Technical Specifications

BHOS2Z180I66M

Sensor	SONY 1/2.8" CMOS Sensor CCD
Resolution	2MP
Pixels	1920×1080
Frame rate	25fps
Sensitivity	Colour 0.05Lux@F1.6, BW 0.01 Lux@F1.6
Optical Lens	4.7 - 84.6 mm motorised zoom lens (x18)
Aperture range	F1.6 – F3.5
Horizontal viewing angle	58.3-3.2 degree (Wide-Tele)
Min-working distance	10-1500mm(Wide-Tele)
Zoom speed	Approx. 2.7s(Optical Wide-Tele)
Shutter control	Auto exposure / aperture priority / shutter priority / manual exposure
Focusing mode	Auto /manual /one time focusing
On-board storage (option)	Micro SD card 128GB
Video compression	H.264/H.265/MJPEG
Bitrate	32 Kbps~16Mbps
Support protocols	TCP/IP、HTTP、DHCP、DNS、DDNS、RTP、RTSP、PPPoE、SMTP、NTP、UPnP、SNMP、FTP、802.1x、QoS、HTTPS、IPv6 (SIP、SRTP、
Alarms	Intelligent alarm
Ethernet	Ethernet RJ-45(10/100/1000Base-T)
Alarm in/out	Optional
Audio in/out connector	Optional
Power supply	230VAC/DC12V
Ingress protection	IP66
Material	316L stainless steel
Operating temp	-40°C~60°C
Relative humidity	≤95% (+25°C)

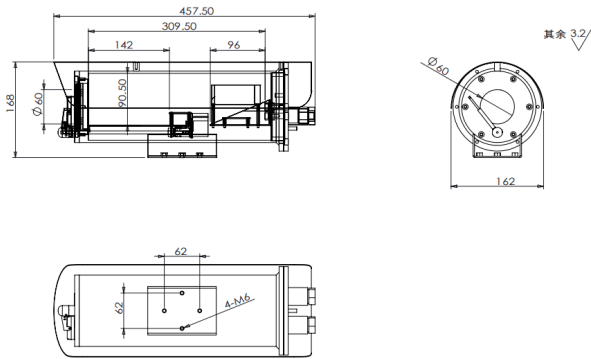
Products

- CCTV
- Access Control
- ANPR
- Visitor Management
- Panic Alarm Systems
- Interview Recording

Markets

- Marine
- Oil & Gas
- Law Enforcement
- Parking
- Security

Atmospheric pressure	80kpa~106 kpa
Dimensions - external (mm)	Φ162×457.5mm(length)
Dimensions - internal (mm)	Φ90.5×309.5mm(length)
Cable entry	2pcs M25*1.5 output (original G3/4")
Mounting options	Wall hanging, fixed bracket , pedestal base, PTZ



For more information on any of our products or services please contact:

Paragon Security Limited

Unit 14, Bentalls Business Park, Colchester Road, Maldon, Essex CM9 4GD UK
 +44 (0)1245 210914
 info@paragon-security.com
 paragon-security.com