

Products

- CCTV
- Access Control
- ANPR
- Visitor Management
- Panic Alarm Systems
- Interview Recording

Markets

- Marine
- Oil & Gas
- Law Enforcement
- Parking
- Security

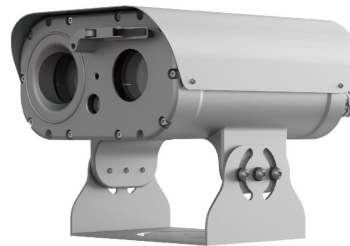


Explosionproof Zoom Camera With Motorized IR LED

FIXED

BHOS2Z36I168

The camera is an ATEX certified fixed camera station, made in 316L stainless-steel, specifically designed for Hazardous Area applications. It is equipped with the latest generation 2MP IP day/night camera, and a motorised Infra-Red illuminator with a range of up to 300m. It is designed for use in hazardous areas in onshore, offshore, marine and heavy industrial environments including passenger ships & commercial vessels with an external protection rating of IP68.



Features

- AISI 316L Electro Polished Stainless Steel
- 2MP resolution
- Optical 36X Zoom lens
- Shock and Vibration Tested
- Tempered Glass
- Built-in Wiper
- Motorised IR illuminator up to 300M
- 24VDC
- IP68
- -40°C~60°C

Products

- CCTV
- Access Control
- ANPR
- Visitor Management
- Panic Alarm Systems
- Interview Recording

Markets

- Marine
- Oil & Gas
- Law Enforcement
- Parking
- Security

Technical Specifications

BHOS2Z36II68

Sensor	1/2" Sony Exmor CMOS
Resolution	2MP
Frame rate	50fps
Sensitivity	Colour: 0.05Lux; B/W: 0Lux(IR LED)
Optical Lens	Optical zoom 36x, 6.0-216mm F1.5
Digital zoom	8x
Horizontal viewing angle	H: 56.5°-2.1° / V: 33.6°-1.2°
IR Illumination range	Motorized IR LED 300m
Image features	DOL HDR, DNR, BLC, HLC, White balance, Exposure control, Mirror, Flip, Colour Corridor format.
Privacy masking	Yes
Analytics	Tamper, Video motion detection
Video compression	Simultaneously H.265, H.264 and MJPEG (Triple streaming). Independent Frame Rate and Bandwidth Control, VBR/CBR.
Support protocols	HTTPS, TCP/IP, UDP, IPv4/v6, HTTP, FTP, UPnP, RTP, RTSP, RTCP, DHCP, ARP, Zeroconf
Interface protocols	Open API, ONVIF profile S, T
RS485	RJ45
Alarm in/out	1 alarm input, 1 relay, 1 RS485
Power supply	24VDC Option 110VAC/220VAC
Power consumption	60W(Max. 80W with water tank and IR LED operation)
Ingress protection	IP68
Hazardous Area	ATEX, IECEx, KCs
Material	AISI 316L Electro Polished Stainless Steel
Operating temp	-40°C - +60°C
Relative humidity	0-90% RH(Non-condensing)
Weight (kg)	Approx. 10Kg
Dimensions - external (mm)	244(W)x237.5(H)x270(D)mm
Cable entry	Two M25 conduit entries
Mounting options	Wall hanging, fixed bracket , pedestal base

For more information on any of our products or services please contact:

Paragon Security Limited

Unit 14, Bentalls Business Park, Colchester Road, Maldon, Essex CM9 4GD UK

+44 (0)1245 210914

info@paragon-security.com

paragon-security.com