

### Products

- CCTV
- Access Control
- ANPR
- Visitor Management
- Panic Alarm Systems
- Interview Recording

### Markets

- Marine
- Oil & Gas
- Law Enforcement
- Parking
- Security



## Marine Fixed Dome Camera - Stainless Steel

### DHOS2F4II66M

This compact camera delivers 2MP HD video. It is housed in a heavy-duty, stainless steel IP66 weatherproof enclosure suitable for hostile environments. The camera is manufactured in 316L stainless steel. It is ready for wall or pendant mounting, requiring only power and an IP connection. It can be used in Marine and Offshore environments. For example, passenger ships, bridges and engine rooms. It offers a choice of lenses/viewing angles.



### Features

- Suited to strong corrosive environments. Anti-corrosion, waterproof.
- 316L grade stainless steel for excellent protection in marine environments
- Uses SONY1/3"CMOS Sensor
- Support dual stream & mobile phone monitoring
- Infra-red illumination
- AC220V/DC12V and PoE
- Wall or pendant mounting
- 2MP resolution
- IP66 rated
- 4 mm, 6 mm, 8 mm lens options
- Suited to harsh environmental conditions including petrochemicals, mining, military, medicine, oil & gas, marine, drilling platforms, food processing and storage, offshore etc.

### Products

- CCTV
- Access Control
- ANPR
- Visitor Management
- Panic Alarm Systems
- Interview Recording

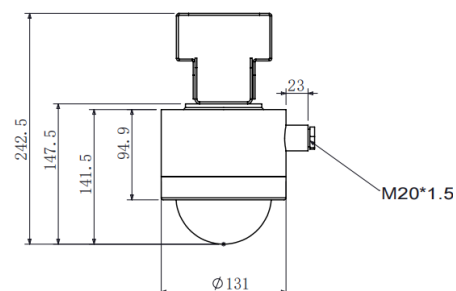
### Markets

- Marine
- Oil & Gas
- Law Enforcement
- Parking
- Security

## Technical Specifications

### DHOS2F4II66M

Sensor	SONY1/3"CMOS Senor CCD
Resolution	2MP
Pixels	1920×1080
Frame rate	25fps
Sensitivity	Colour 0.1Lux@F1.1, BW 0.01 Lux@F1.1;
Optical Lens	4mm、6mm、8mm Options
IR Illumination range	15m @ 850nm
Image features	Rotate mode, Saturation, Brightness, Contrast adjustable by client software or web browser
Video compression	H.264/H.265/MJPEG
Bitrate	32 Kbps~8Mbps
Support protocols	RTSP/FTP/PPPOE/DHCP/DDNS/ NTP/ UPnP etc .
Interface protocols	ONVIF,PSIA,CGI,ISAPI,GB28181
Alarms	Optional
Audio compression	Baseline Profile / Main Profile
Ethernet	Ethernet RJ-45(10/100/1000Base-T)
Power supply	DC12V/POE(Optional)
Ingress protection	IP66
Material	316L stainless steel
Operating temp	-40°C~60°C
Relative humidity	≤95% (+25°C)
Atmospheric pressure	80kpa~106 kpa
Dimensions - external (mm)	Dia 157.5 147.5H
Cable entry	1pcs M20*1.5(original 1* G1/2" )
Mounting options	Wall hanging, fixed bracket , pedestal base



For more information on any of our products or services please contact:

#### Paragon Security Limited

Unit 14, Bentalls Business Park, Colchester Road, Maldon, Essex CM9 4GD UK

+44 (0)1245 210914

info@paragon-security.com

paragon-security.com